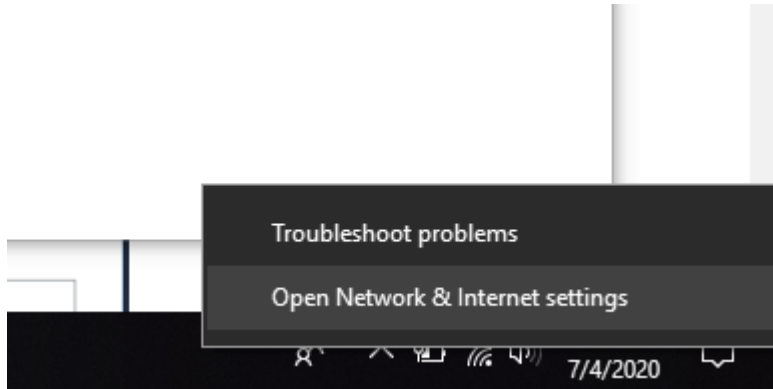
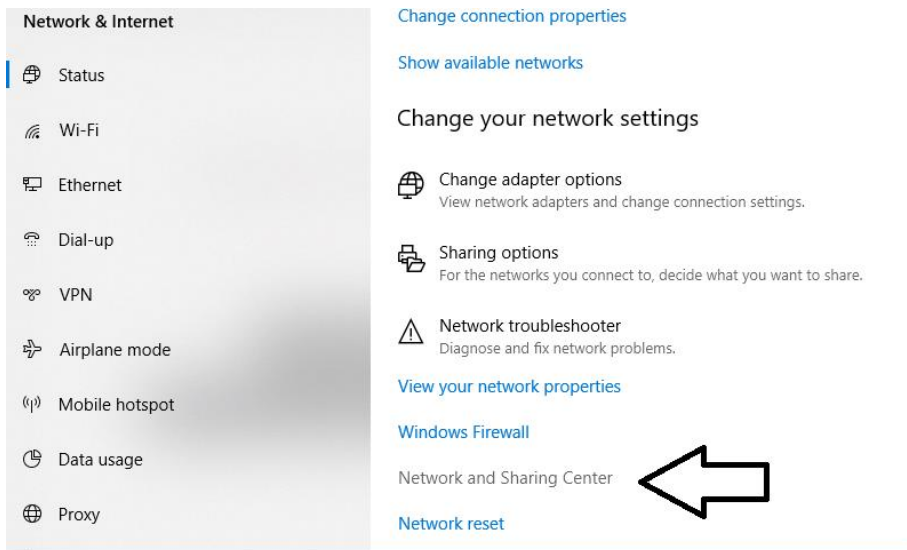


How to manually connect to ULG-Staff WIFI on Windows 10

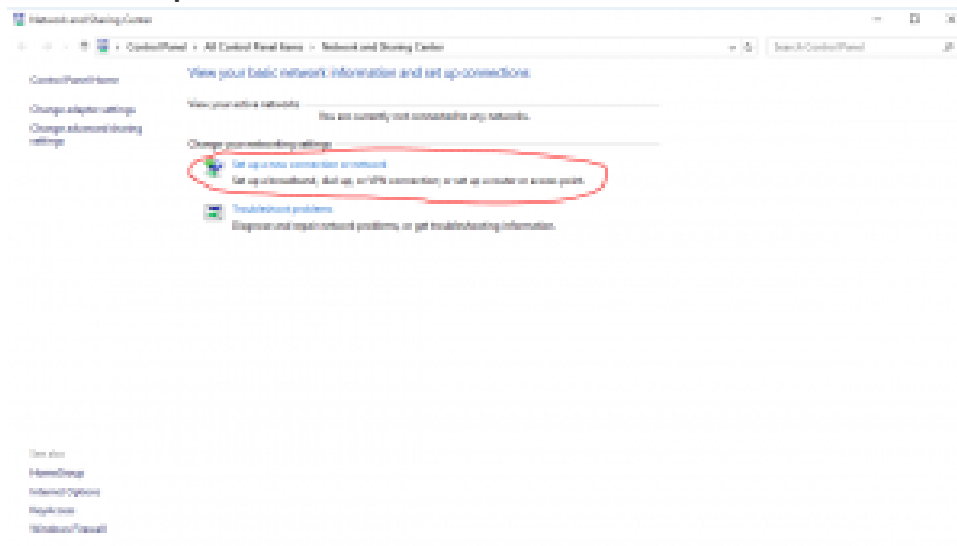
1. Right click on Wifi icon > Open Network & Internet Settings.



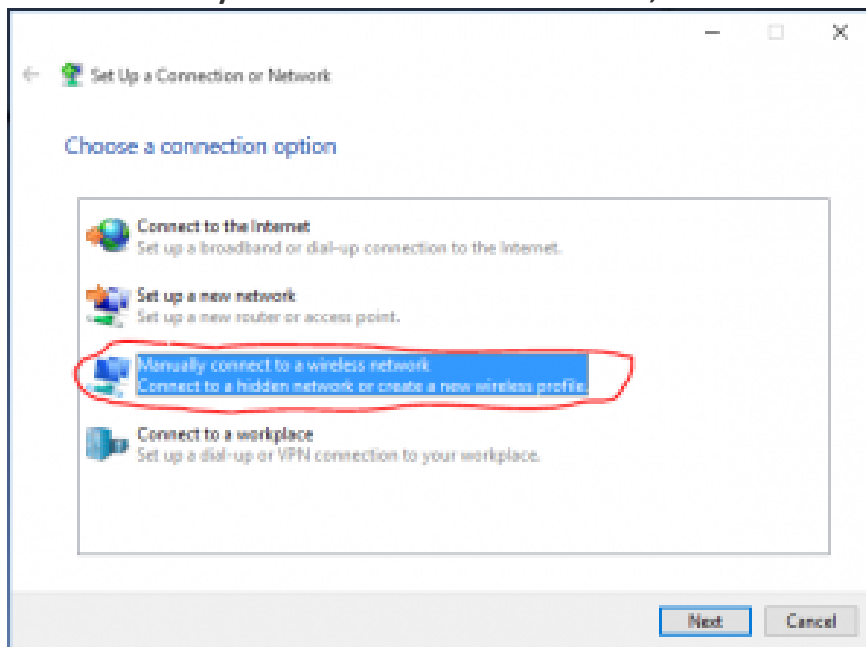
2. Click Network and Sharing Center



3. Click **Set up a new connection or network**



4. Click **Manually connects to a wireless network**, then click **next**.



5. Under **Information for the wireless network you want to add**

- a) Enter **ULG-Staff** into the **Network name** field.
- b) Select **WPA2---Enterprise** in the **Security type** dropdown menu.
- c) Select **AES** in the **Encryption type** dropdown menu.
- d) Check to select **Start this connection automatically**.

e) Click **Next**.

Manually connect to a wireless network

Enter information for the wireless network you want to add

Network name:

Security type:

Encryption type:

Security Key: Hide characters

Start this connection automatically

Connect even if the network is not broadcasting

Warning: If you select this option, your computer's privacy might be at risk.

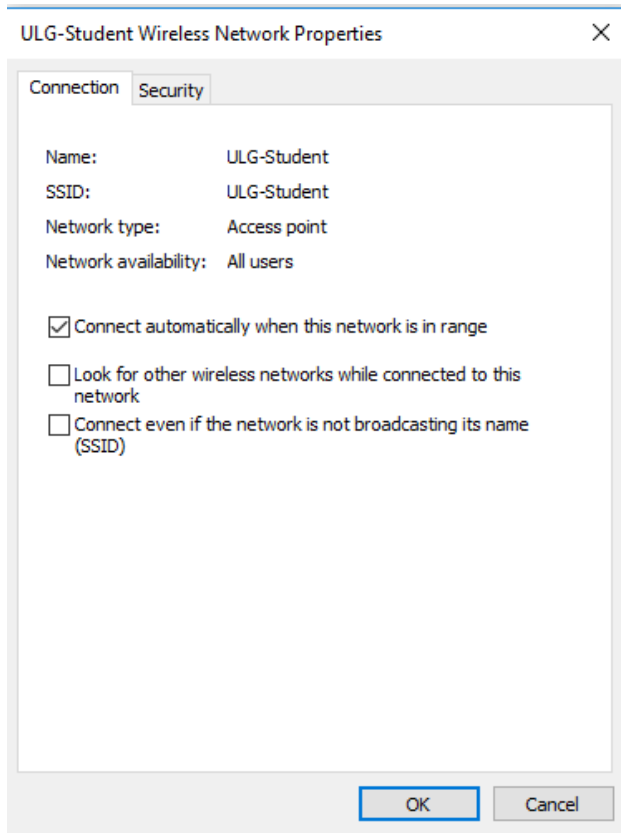
6. Click **Change connection settings**.

Manually connect to a wireless network

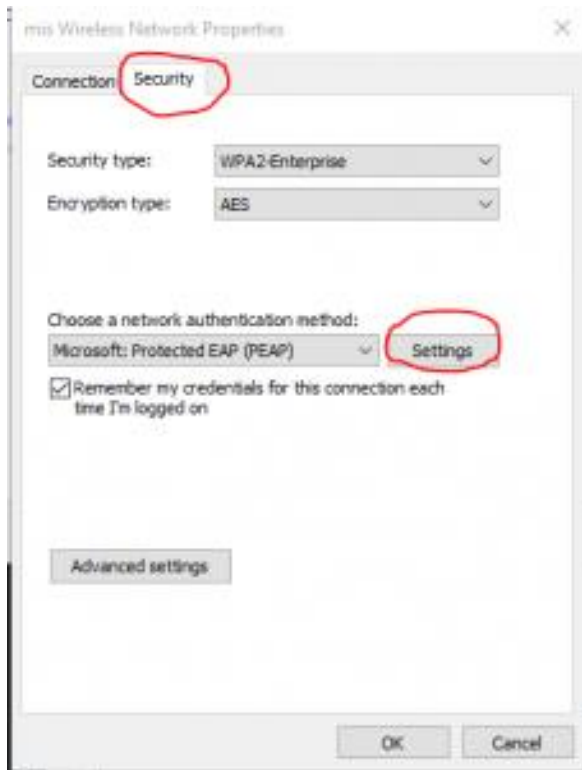
Successfully added ULG-Student

[→ Change connection settings](#)
Open the connection properties so that I can change the settings.

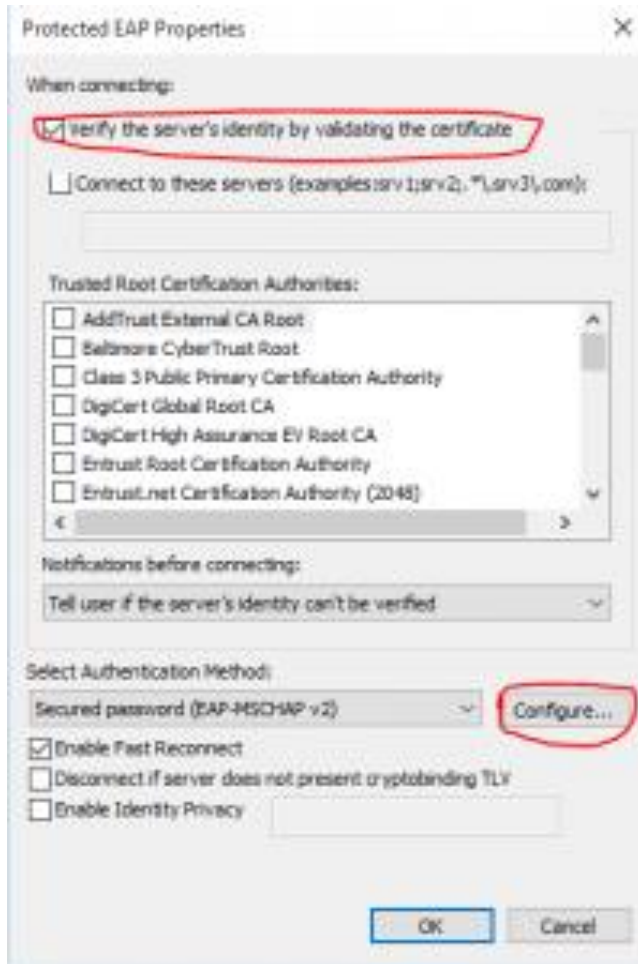
7. The **Connection** tab should look like this:



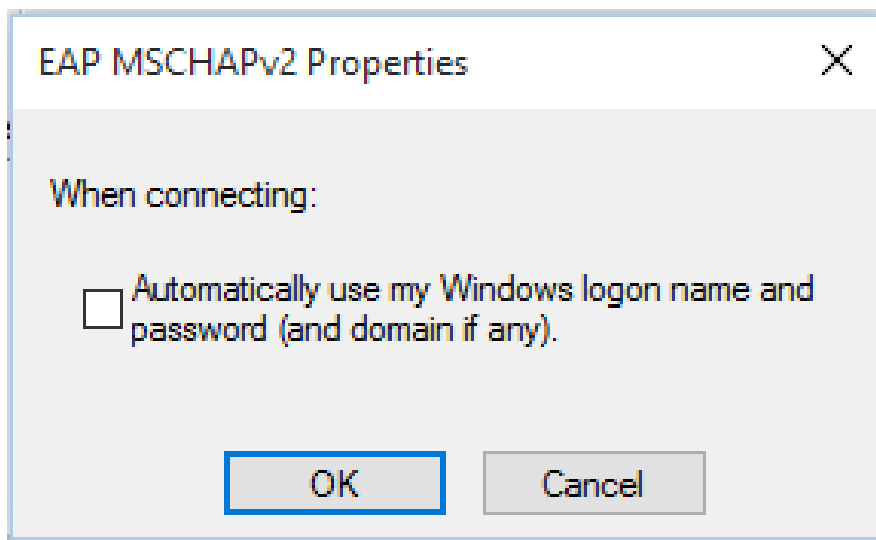
8. Click on the **Security** tab, then **Settings**.



9. Uncheck **Verify the server's identity by validating the certificate**, then click the **Configure** button.



10. Make sure the **Automatically use my Windows logon name and password (and domain if any)** checkbox is unchecked. Finally click **OK**.



11. Click **OK** to close Protected EAP Properties.

12. In the Security tab, click on **Advanced Settings**.



13. Check **Specify Authentication mode** and choose **User Authentication**. Click **OK**.



14. Click **OK** to close **ULG-Staff** Wireless Network properties.

15. Click **Close** to complete the setup.

A network dialog box will appear. If not, find the WiFi called **ULG-Staff**. Enter your username and password (same as your email account). And then click **OK**. The username should be “uit\staff computer username” (uit\lisag for example)